

TYPICAL SKIN CONDITIONS / ALLERGIES

DANDRUFF



SYMPTOMS

Dry flaking skin, which can be caused by cold winter weather and diet



TREATMENT

- Increase high quality omega 3 and 6 fatty acids in diet
 - Targetted shampoos
- *vet will want to check for underlying conditions.

SYMBOL KEY



Treat at Home



Vet Visit Rating Severity Number 1-5 (5= severe)



GROOMING

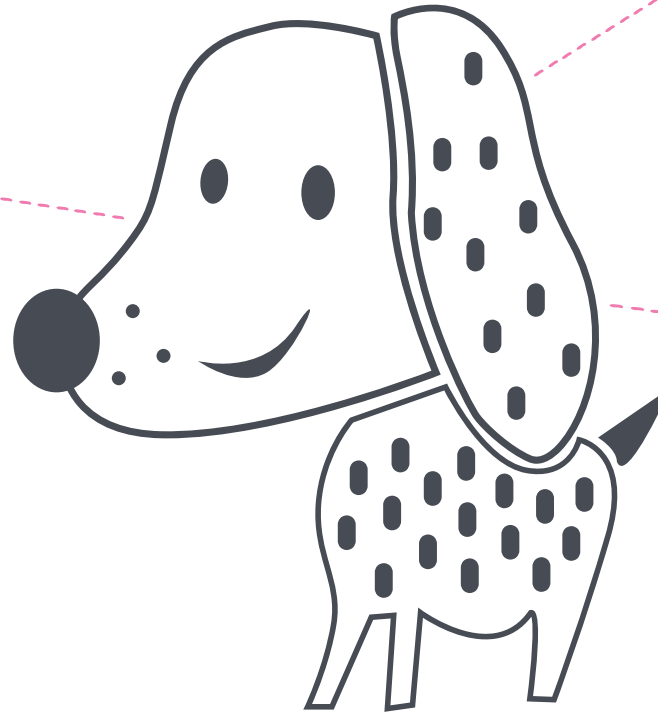
TYPICAL SKIN CONDITIONS / ALLERGIES

ENVIRONMENTAL ALLERGIES



SYMPTOMS

- A bit like hay fever in humans except it causes itching skin in dogs rather than sneezing and water eyes in humans
- Typically, sudden itching on face, feet, chest or stomach after dog being in contact with cause of an irritation



DIAGNOSIS

- By Blood test by a vet



TREATMENT

- Can involve shampoos, tablets and injections

SYMBOL KEY



Treat at Home



Vet Visit Rating Severity Number 1-5 (5= severe)



GROOMING

TYPICAL SKIN CONDITIONS / ALLERGIES

FLEAS & TICKS

Fleas



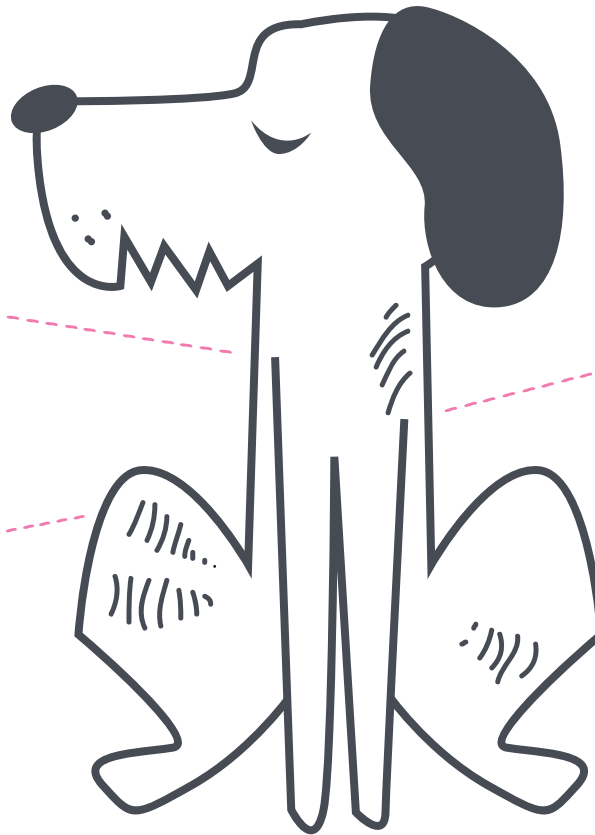
SYMPTOMS

- Fleas saliva is a strong allergen for pets and can cause extreme itching



PREVENTION

- Vacuum your home regularly, and wash bedding. Make sure your pet is up to date with their preventative medication.
- Prevent Topical treatments
- Collars and clothing imbedded with permethrin which repels ticks and fleas



Ticks



SYMPTOMS

When ticks bite they stay attached to the skin so you will be able to see these. They can carry diseases so it's important to monitor the area for infection after removal. It's important to remove the whole tick and not leave the head attached. You can buy tick remover.



PREVENTION

- Always check your dog and yourself for ticks after a walk and remove quickly.

SYMBOL KEY



Treat at Home



Vet Visit Rating Severity Number 1-5 (5= severe)



GROOMING

TYPICAL SKIN CONDITIONS / ALLERGIES

FOLLICULITIS

Inflamed hair follicles and often occurs alongside another skin problems.



SYMPTOMS

- Sores, bumps and scabs on body



DIAGNOSIS

- Take your pup to the Vet if you are concerned



TREATMENT

- Oral antibiotics, antibacterial ointments, shampoos

SYMBOL KEY



Treat at Home



Vet Visit Rating Severity Number 1-5 (5= severe)



GROOMING

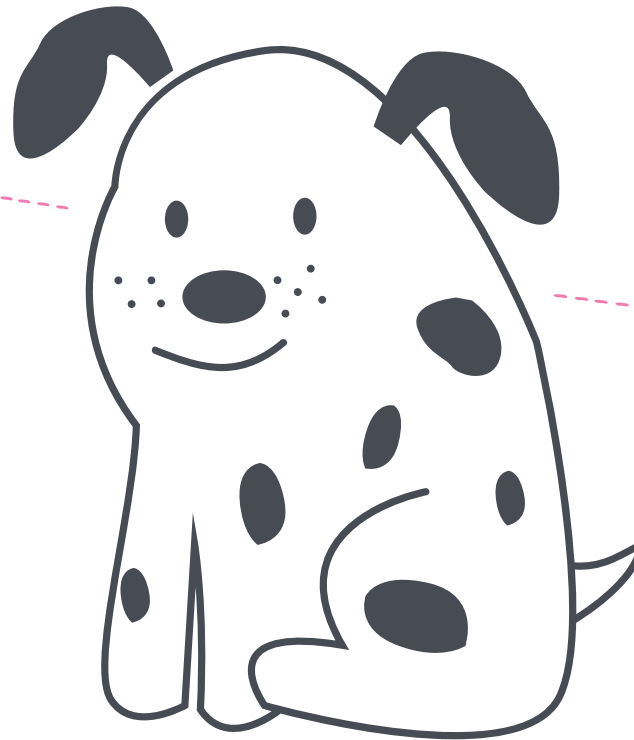
TYPICAL SKIN CONDITIONS / ALLERGIES

FOOD ALLERGIES



SYMPTOMS

- Itching of face, feet, ears and anus signs of an allergy to dog's food.



DIAGNOSIS & TREATMENT

- Like humans this is diagnosed by an elimination process to rule out different allergens - this should be vet led and can take 8-12 weeks.

SYMBOL KEY



Treat at Home



Vet Visit Rating Severity Number 1-5 (5= severe)



GROOMING

TYPICAL SKIN CONDITIONS / ALLERGIES

IMPETIGO

Puppies are more prone to Impetigo and this may also indicate an underlying skin condition.



SYMPTOMS

- Blisters on dog's tummy which can burst and scab



DIAGNOSIS

- Take to vet as soon as you notice any symptoms, as with all conditions in young animals.



TREATMENT

- Antibiotics and specialised washes.

SYMBOL KEY



Treat at Home



Vet Visit Rating Severity Number 1-5 (5= severe)



GROOMING

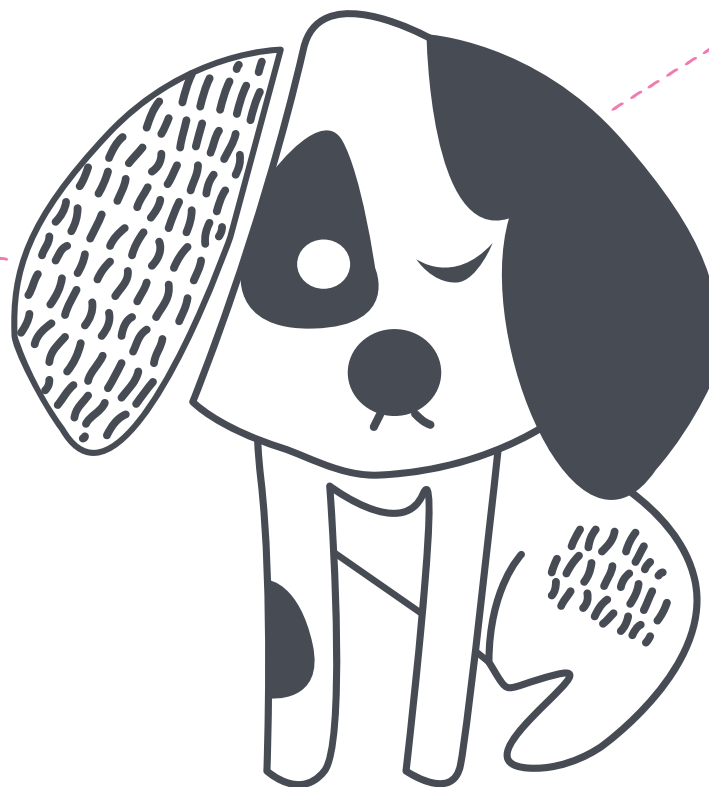
TYPICAL SKIN CONDITIONS / ALLERGIES

LUPUS
An Autoimmune disease



SYMPTOMS

- Open sores which take a long time to heal particularly around nose, eyes and paws.



DIAGNOSIS 5

- Take your dog to the vet immediately if you notice these symptoms.



TREATMENT 2

- A series of Vet prescribed antibiotics and immunosuppressive tablets.

SYMBOL KEY



Treat at Home



Vet Visit Rating Severity Number 1-5 (5= severe)



GROOMING

TYPICAL SKIN CONDITIONS / ALLERGIES

MANGE

Severe Condition caused by several species of mites. There are two different types Sarcoptic mange (caused by Sarcoptic mites)



SYMPTOMS

- Intense itching first seen on dog's ears resulting in hair loss on face and leg
- Demodectic mange (caused by Demodex mites)
- Tends to affect dogs under one or older dogs with another underlying condition.



TREATMENT

- Tablets and dedicate shampoo prescribed by Vet
- Wash bedding regularly and make sure infected dog avoids contact with other pets.

SYMBOL KEY



Treat at Home



Vet Visit Rating Severity Number 1-5 (5= severe)



GROOMING

TYPICAL SKIN CONDITIONS / ALLERGIES

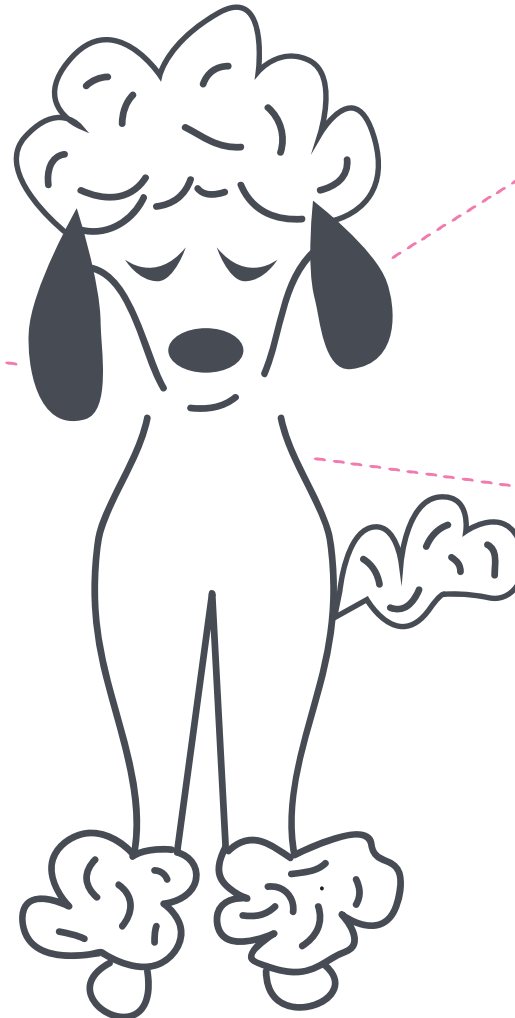
RING WORM

Contrary to its name this is fungus and not a worm and it is highly contagious!!



SYMPTOMS

- Circular crusty bald patches on dog's head, paws ears and front legs
- Inflamed and red skin from scratching irritated areas



DIAGNOSIS

- Contact vet immediately



TREATMENT

- Vet prescribed topical treatment to kill fungus and prevent spreading

SYMBOL KEY



Treat at Home



Vet Visit Rating Severity Number 1-5 (5= severe)



GROOMING

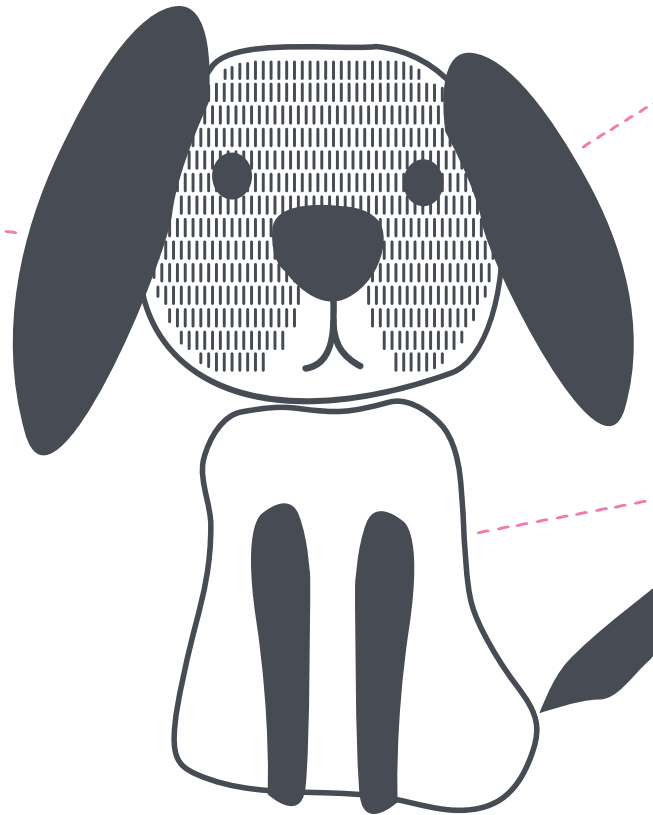
TYPICAL SKIN CONDITIONS / ALLERGIES

YEAST INFECTION



SYMPTOMS

- Skin thickening and itching in ear canal, between dog's toes, groin area and perineum.
- Discolouring of skin in these areas and unpleasant smell



DIAGNOSIS

- Take your dog to the vet



TREATMENT

- Topical Cream, Washes, and Tablets

SYMBOL KEY



Treat at Home



Vet Visit Rating Severity Number 1-5 (5= severe)



GROOMING